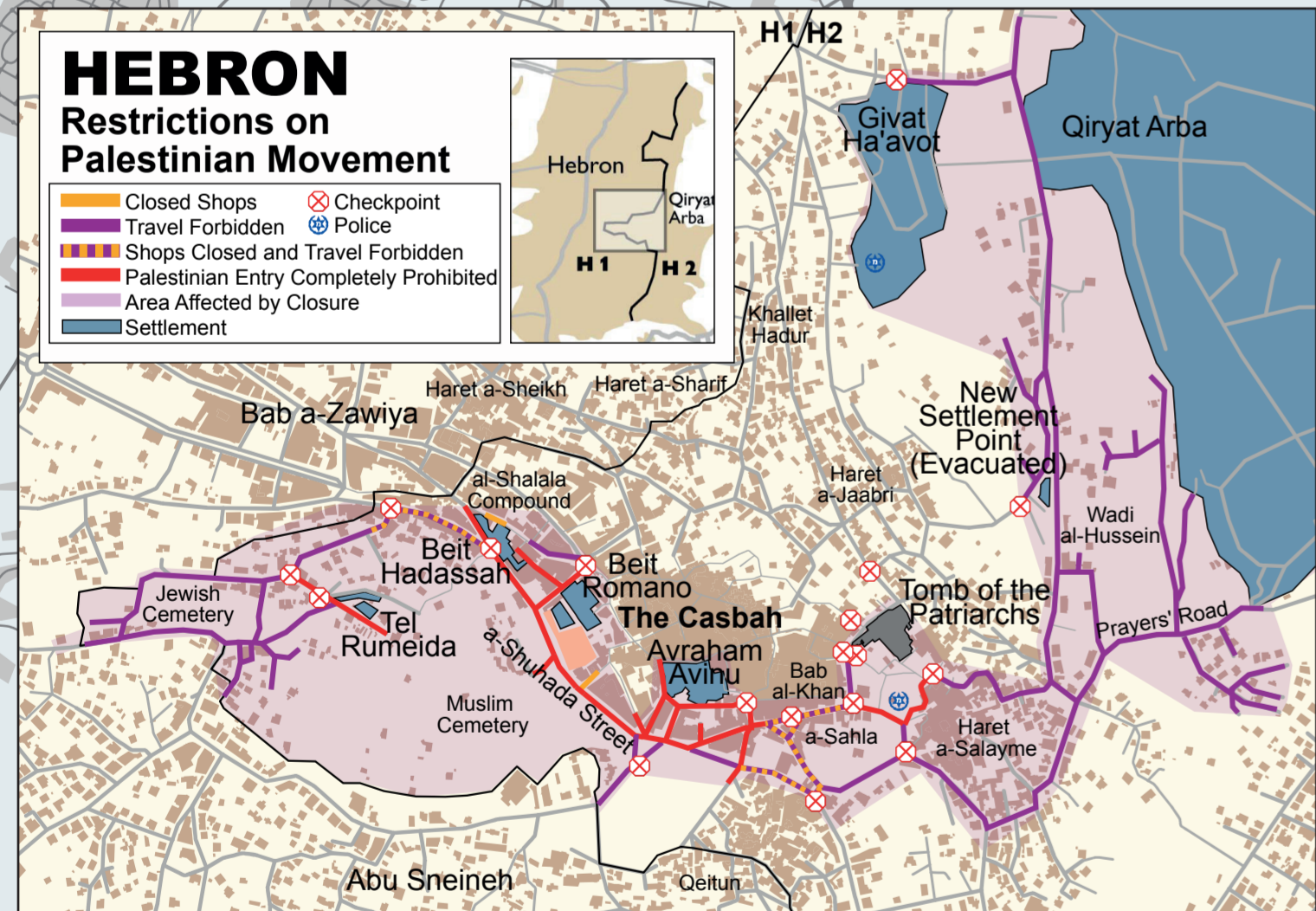
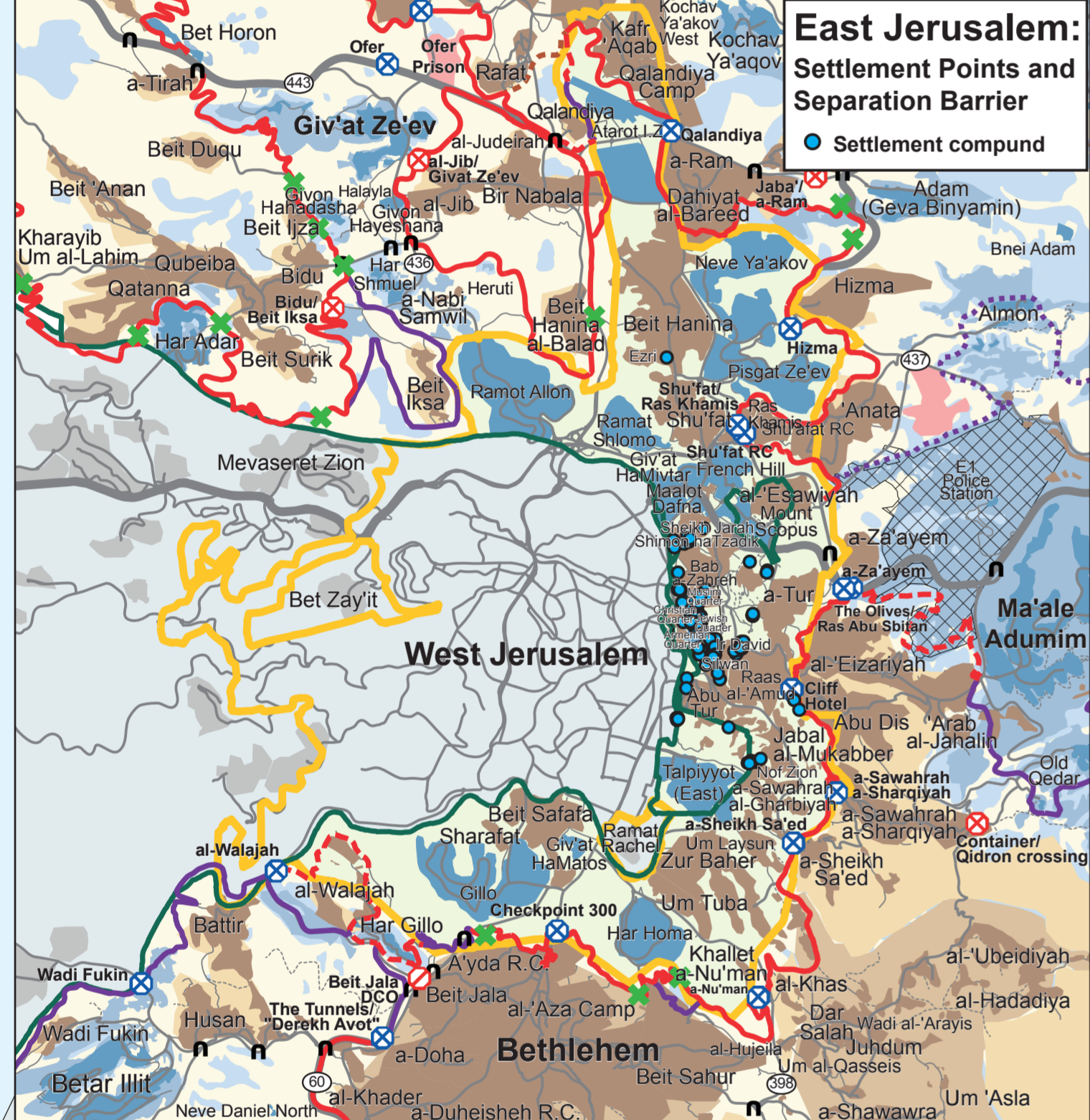
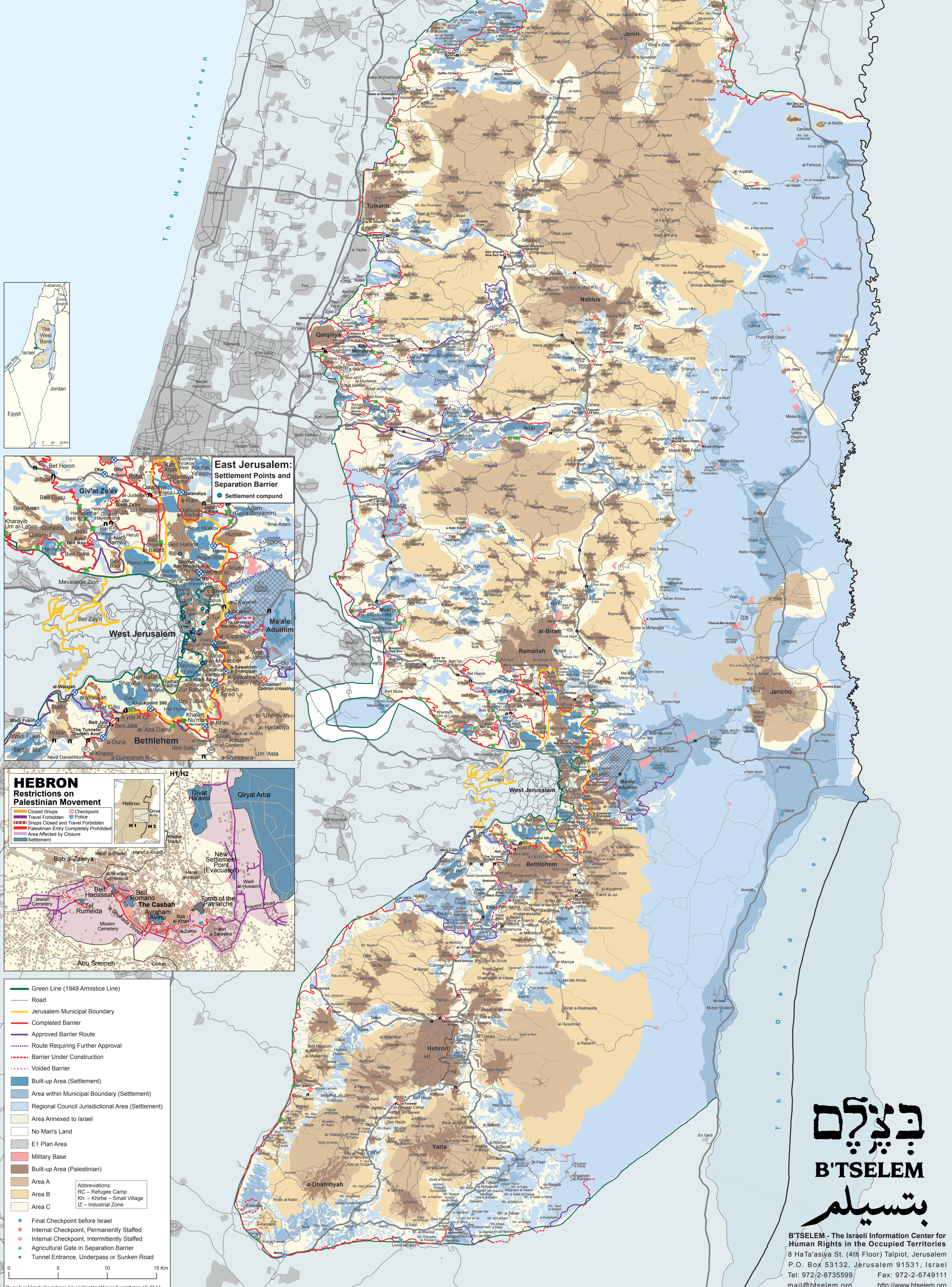


# The West Bank

Settlements and the Separation Barrier

June 2012



- Green Line (1949 Armistice Line)
  - Road
  - Jerusalem Municipal Boundary
  - Completed Barrier
  - Approved Barrier Route
  - Route Requiring Further Approval
  - - - Barrier Under Construction
  - - - Voided Barrier
  - Built-up Area (Settlement)
  - Area within Municipal Boundary (Settlement)
  - Regional Council Jurisdictional Area (Settlement)
  - Area Annexed to Israel
  - No Man's Land
  - E1 Plan Area
  - Military Base
  - Built-up Area (Palestinian)
  - Area A
  - Area B
  - Area C
- Abbreviations:  
 RC – Refugee Camp  
 Kh. – Khirbe – Small Village  
 IZ – Industrial Zone
- Final Checkpoint before Israel
  - Internal Checkpoint, Permanently Staffed
  - Internal Checkpoint, Intermittently Staffed
  - Agricultural Gate in Separation Barrier
  - Tunnel Entrance, Underpass or Sunken Road

**ב'תסלם**  
**B'TSELEM**  
**ב'תסלם**

B'TSELEM - The Israeli Information Center for Human Rights in the Occupied Territories  
 8 HaTa'asiya St. (4th Floor) Talpilot, Jerusalem  
 P.O. Box 53132, Jerusalem 91531, Israel  
 Tel: 972-2-6735599 Fax: 972-2-6749111  
 mail@btselem.org http://www.btselem.org

The roads and Israeli cities polygons data (c) OpenStreetMap (and) contributors, CC-BY-SA